

We are the  
**Journey  
Makers**

Parish Council Forum  
October 2024

# Welcome & Agenda

10.30	Welcome and Introductions
10:35	Community Update: Julie Walker, Community Engagement Manager
10:50	Operational Update: Duncan Smith, Flight Evaluation Unit Manager
11:05	Future Airspace Update: Jonathan Challis, Future Airspace Consultation & Technical Liaison Manager
11:20	Development Update: Andrew Thompson, Planning Manager
11:35	Business Update: Rhys Whalley, Corporate Affairs Director, Manchester
11:50	Any Other Business

We are the  
**Journey  
Makers**

Julie Walker

Community Engagement Manager

Community Update

# Community Trust Fund July and October meetings



July: 14 grants total £25,527.65

October: 18 grants total £38,034.75

- Launch of new Survey Monkey apply online application process has been a success
- Attended funding forums in Wythenshawe and Stockport
- Undergoing external audit for FY23-24

Items supported included:-

Kayaks

Percussion instruments

Historic restoration – stone trough

A track hoist

Kitchen equipment

Bench

Risers for choir (pictured)

Recycling Bins for park (pictured)





# Volunteering

Over the summer our teams have headed out to volunteer at many locations including: The David Lewis Centre, Love Where you live Wythenshawe, Lower Moss Wood Animal Sanctuary, Smartworks, The Message, Woodhouse Park Children's Centre, The Bread-and-Butter Thing, Seashell Trust and Quarry Bank Mill.



# Outreach



As always, our Community team have been out and about over the summer meeting our local communities at various events including:

The Wythenshawe Games

Mobberley Rose Queen

Knutsford May Day

WHP Children's Centre Summer Family Fun Day

Knutsford Picnic in the Park

And the Cheshire Show, where we were proud to win a 'Highly Commended Trade Stand' rosette





# Youth Forum 2024-25

Local young people are invited to join this year's Manchester Airport Youth Forum, to have their say on:

- Career opportunities for young people at Manchester Airport
- How the Airport supports our local communities, including how we manage noise
- Manchester Airport's commitment to the environment, including Net Zero
- Our new Sustainability Strategy (launching Spring 2025)
- 2 online forums, 1 meeting in person - culminating in a MAG Youth Summit at EMA







Coming up

# Autumn Leaves

MANCHESTER AIRPORT INVITES  
YOU TO JOIN US FOR OUR  
ANNUAL AUTUMN LEAVES  
LUNCH

**VENUE:** THE LIFESTYLE CENTRE  
**DATES:** 13TH OR 14TH NOVEMBER  
**TIMES:** 11:00 - 15:00

Call us on 07702966326 or email  
[community@manairport.co.uk](mailto:community@manairport.co.uk) for your free ticket, giving your  
name, age and address



# Parking issues

## The Airport offers:

- a range of parking options to suit all budgets
- a free drop off area
- bus, metro and train links
- there are also third-party parking operators

Despite this a small minority of people choose to park on residential streets, or rent residents' driveways.

We work in partnership with Police and local highways authorities to try to address this





We are the  
**Journey  
Makers**

Duncan Smith

Flight Evaluation Unit Manager

& Holly Dimmick

Flight Evaluation Advisor

Operational Update



# Noise Action Plan 2024 – 2028 update

Consultation on draft noise action plan - 5<sup>th</sup> July to 27<sup>th</sup> September

245 responses received, some duplicated via email and our online form

Consultation responses currently being reviewed and any appropriate amendments to the plan will be included

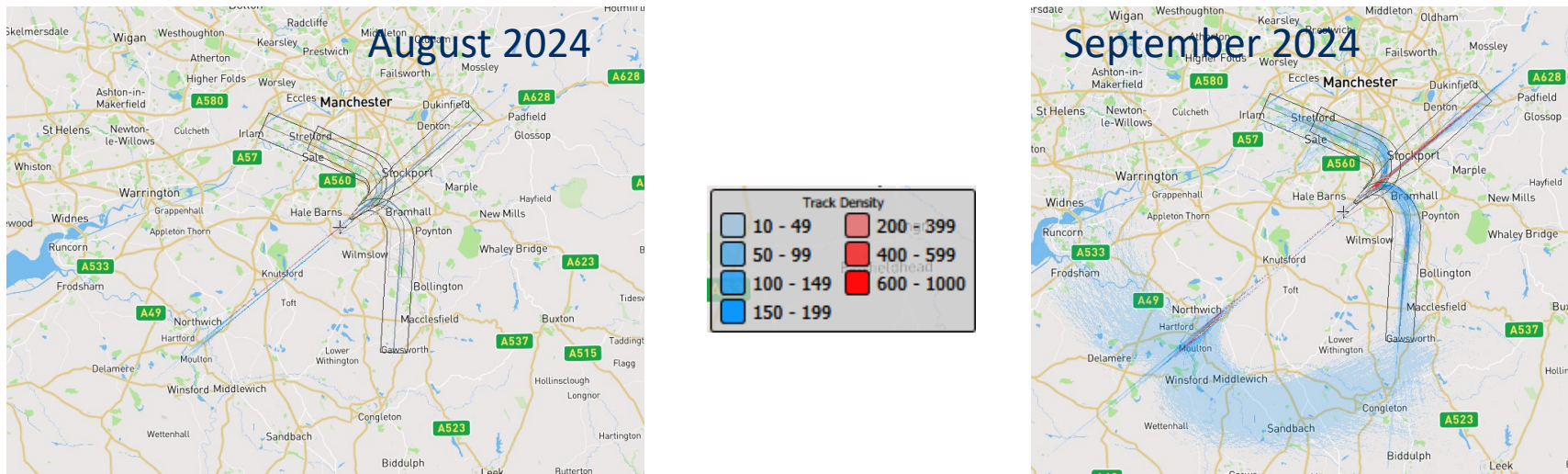
The (amended) draft noise action plan will then be submitted to Defra

We would hope to secure SoS Defra approval by the end of this year

# General update

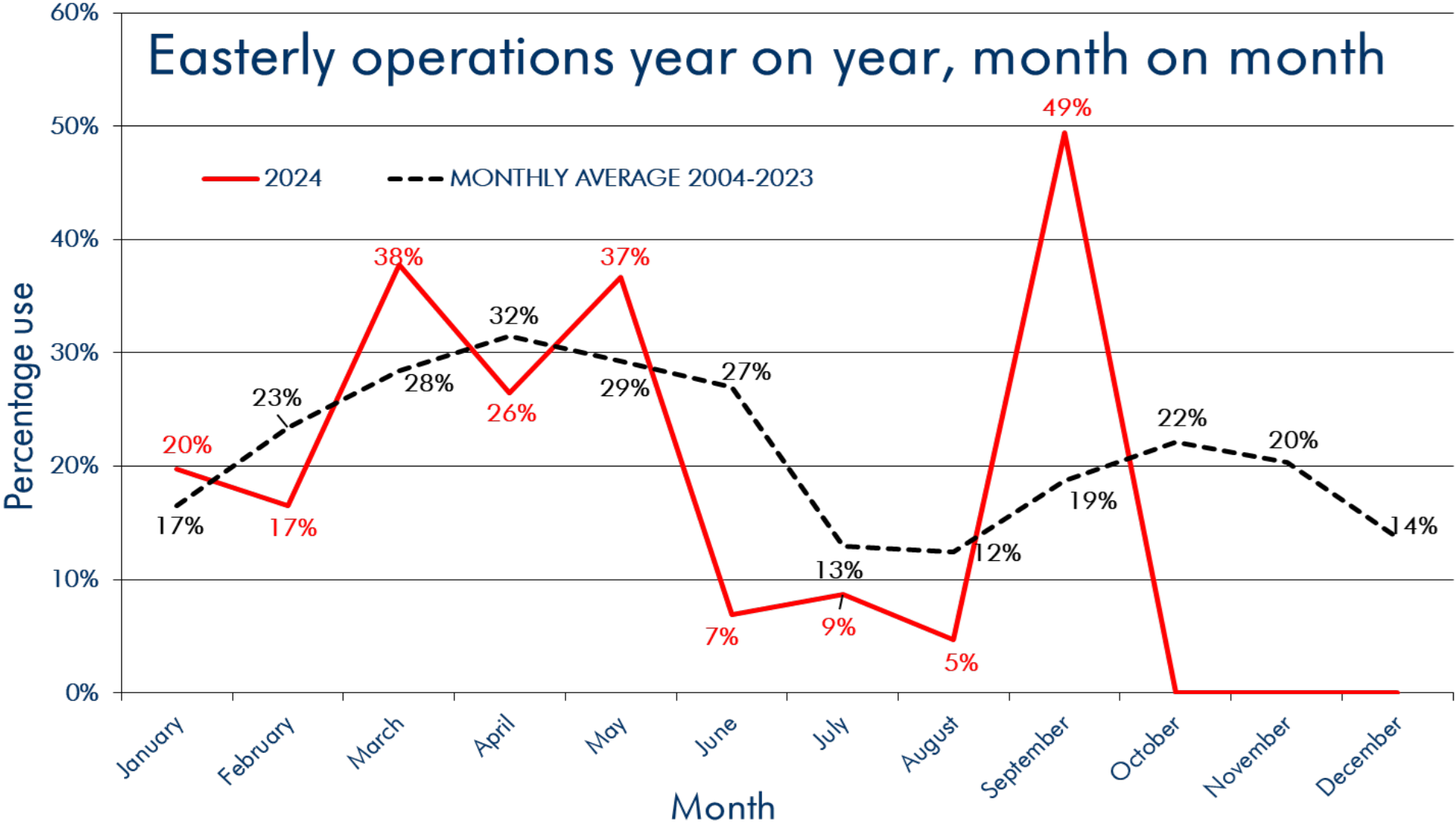
Some recent suggestions that the routes aircraft fly have changed – **this is not correct**

We have had prolonged periods of easterly operations recently. September 2024 was extreme, with a near 50/50 modal split. This was similar at all MAG airports.



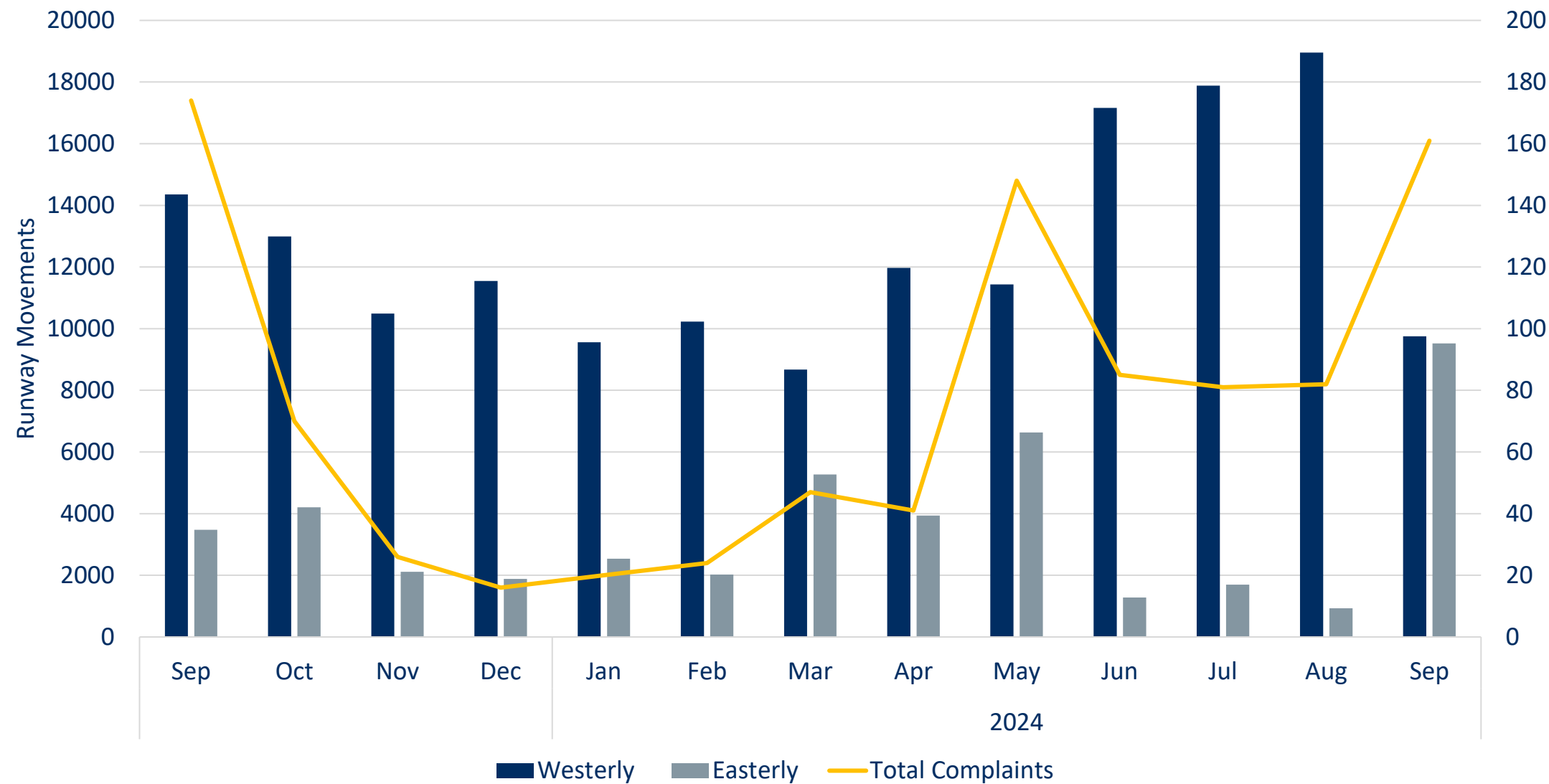
Due to weather across Europe, we have seen periods of poor On-Time Performance, with late running aircraft into the night period, beyond 23:00. Again, this has been shown across all MAG airports.

# Runway Modal Split

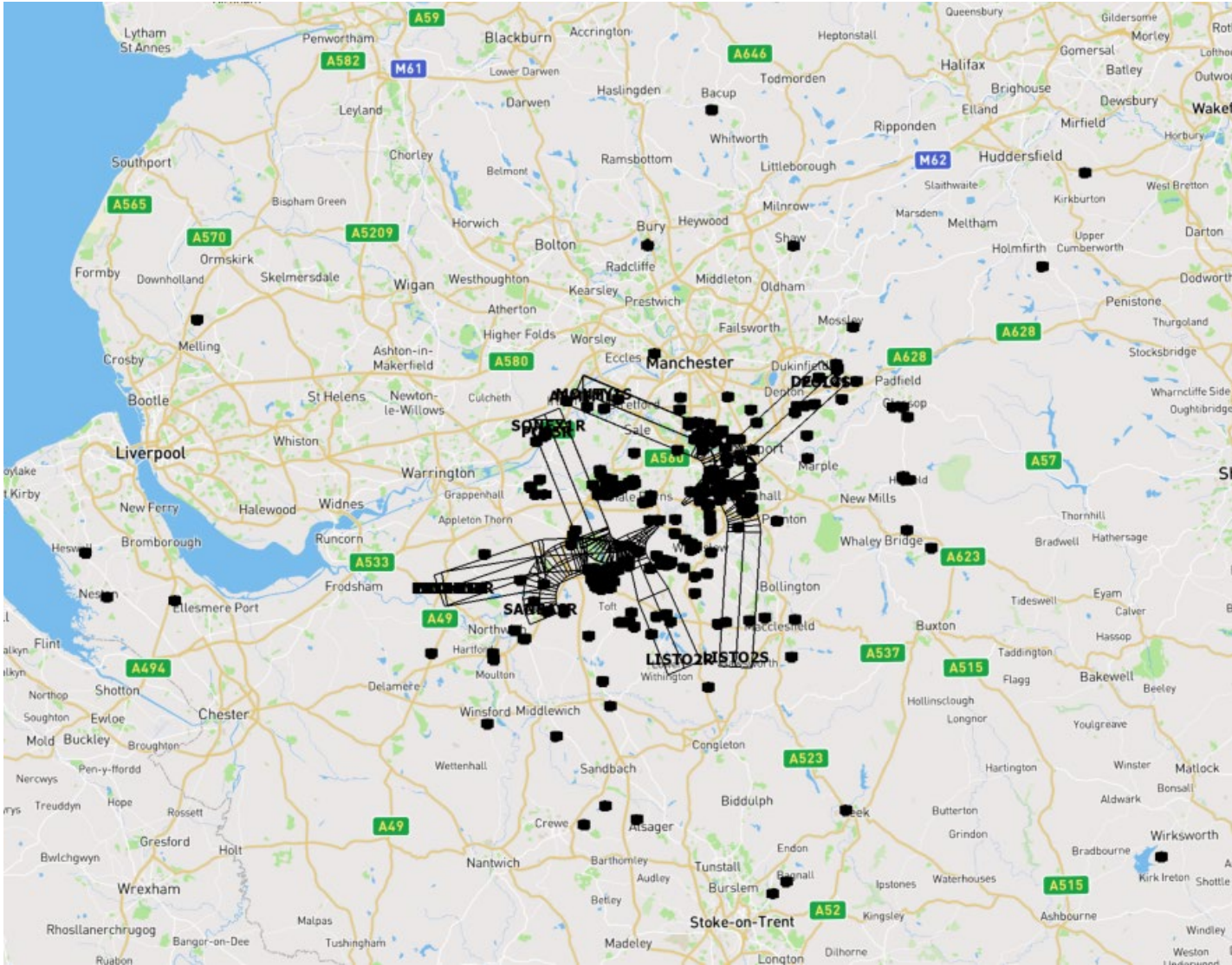




# Runway Modal Split



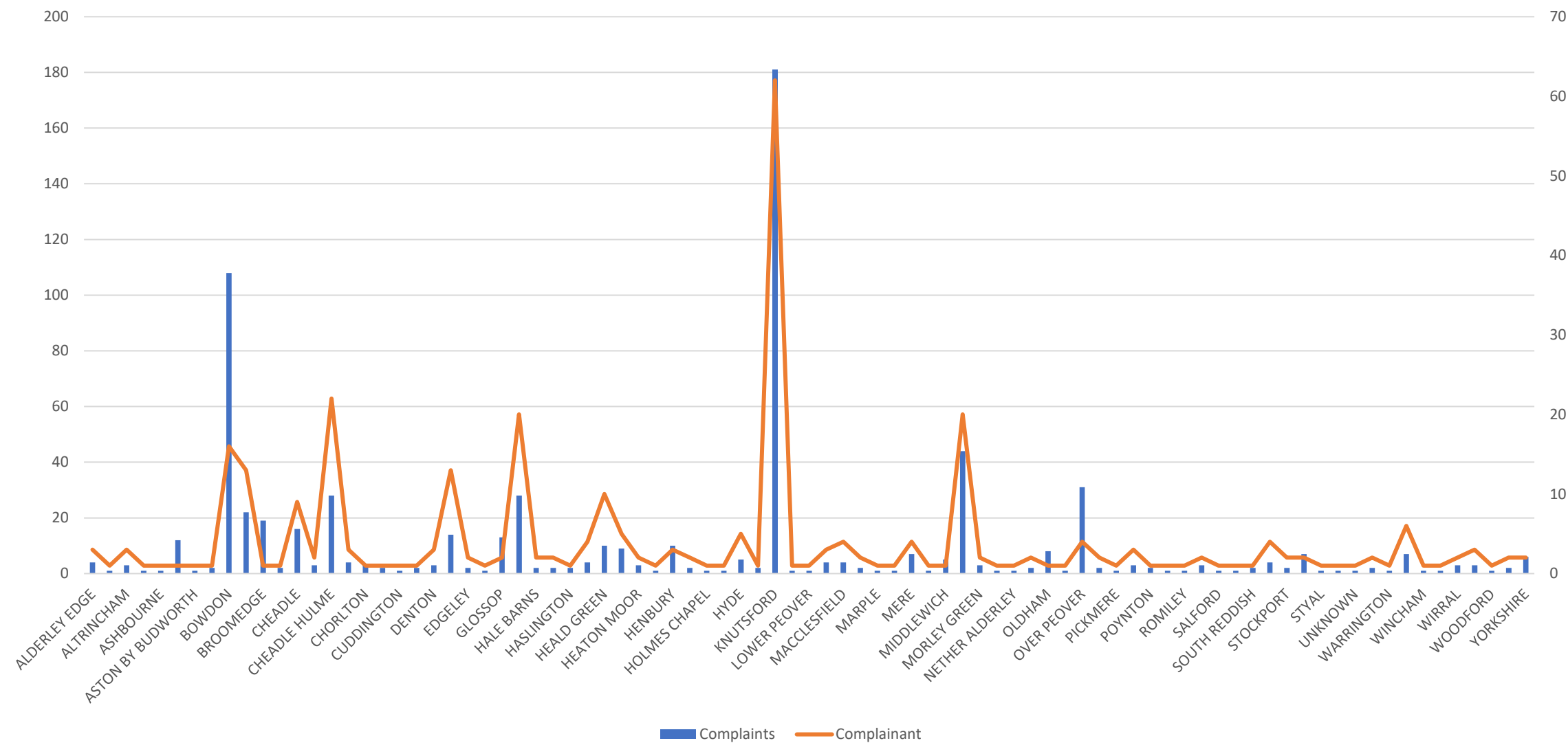
## Complainant Locations: Jan 24 – Sep 24



Total Complaints  
= 709

Total Complaints  
Jan 23 – Sep 23  
= 1459

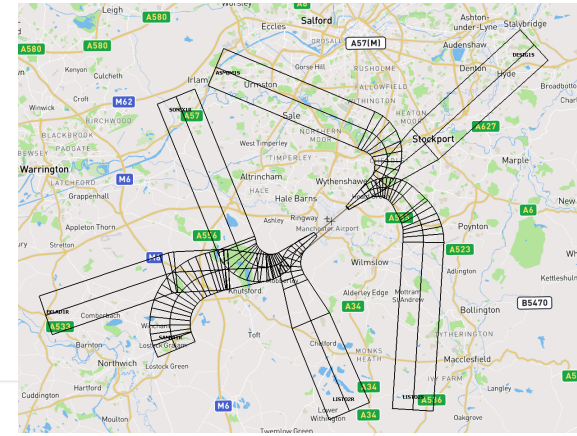
# Complainant Locations – Jan 24 – Sep 24



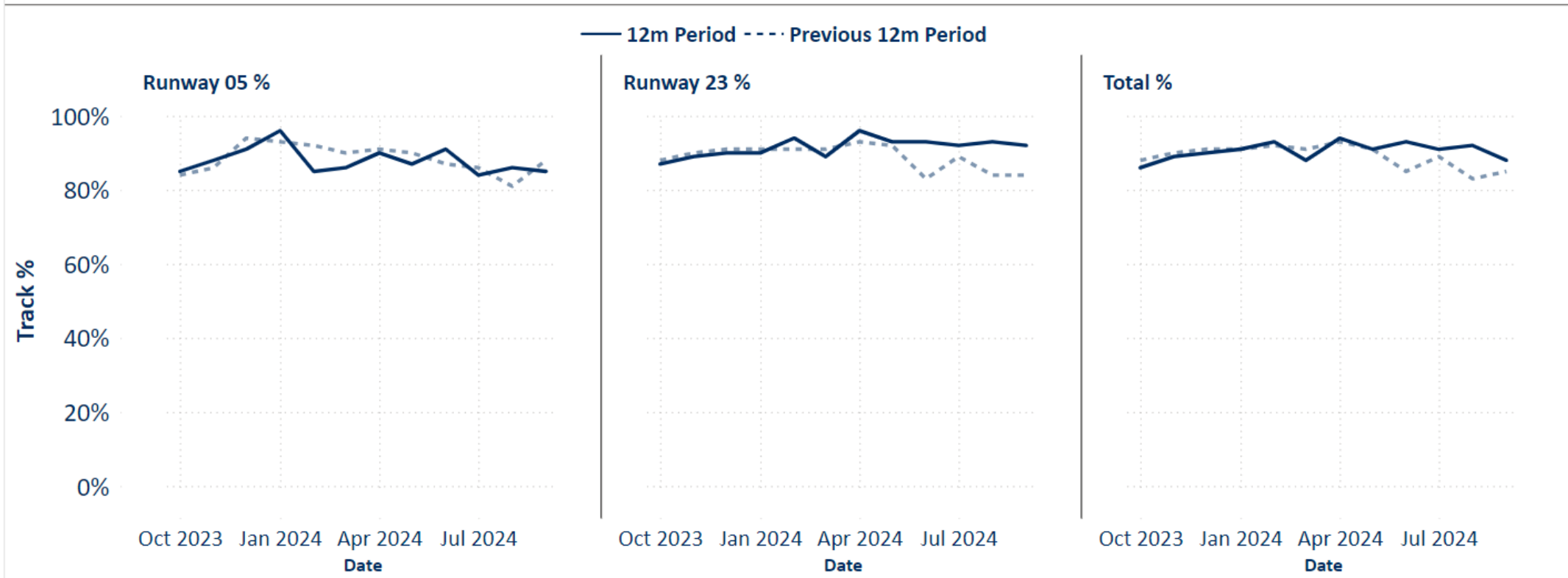
# Track Keeping Compliance

To ensure as few people as possible are affected by aircraft noise, departing aircraft are required to follow specific flight paths called Noise Preferential Routes (NPR).

- Jan 24 – Sep 24 total: 92%
- Jan 23 – Sep 23 total: 89%



### Track Keeping %

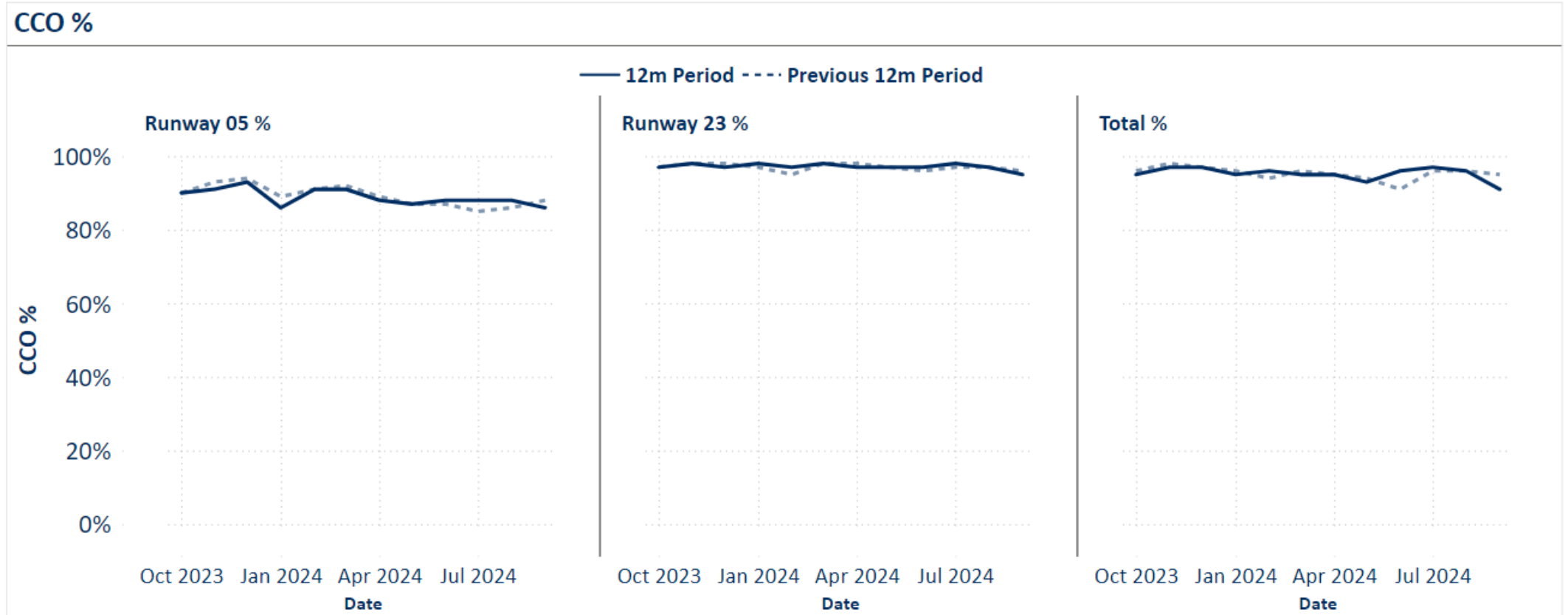




# Continuous Climb Performance

Continuous climb departures are designed to enable aircraft to keep climbing after take-off until they reach their cruising altitude. The aim is to take the aircraft to a higher altitude, quicker.

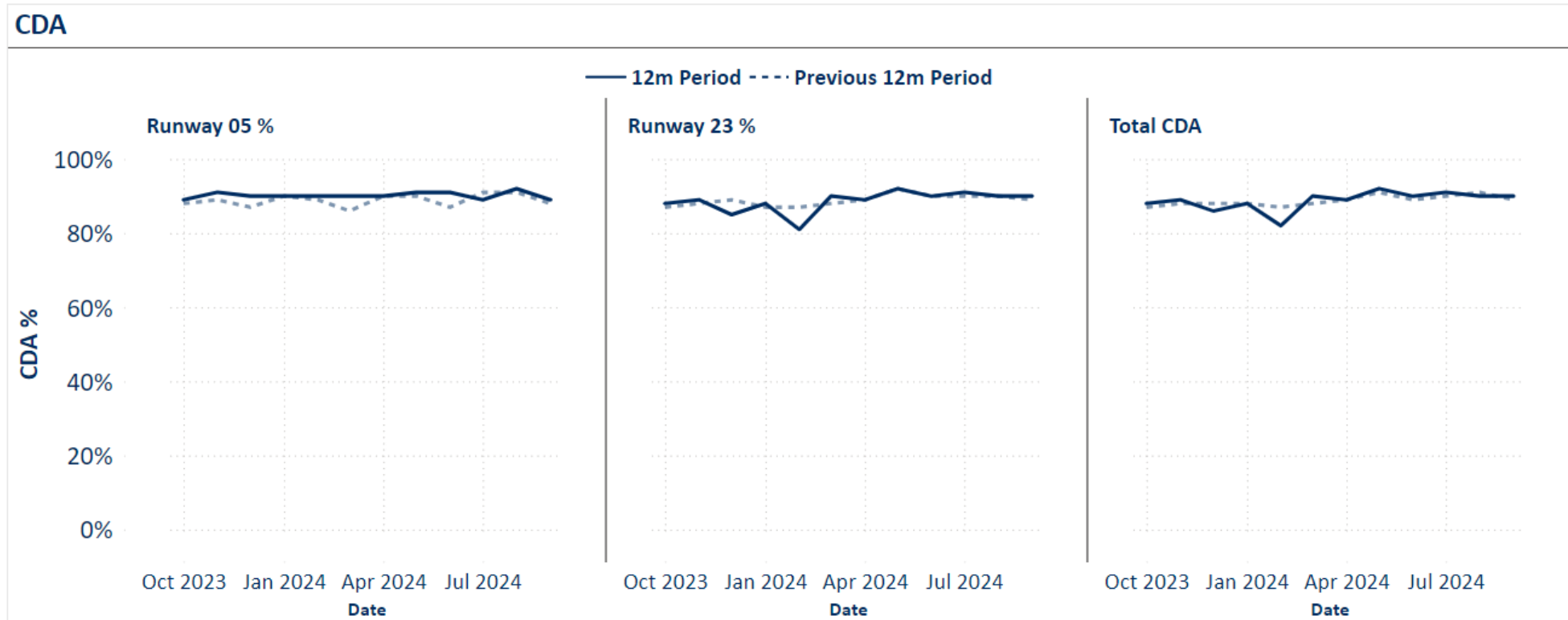
- Jan 24 – Sep 24 total: 95%
- Jan 23 – Sep 23 total: 95%



# Continuous Descent Performance

Continuous Descent Approaches, aims to reduce aircraft noise by keeping aircraft higher for longer, adopting a more gradual descent rather than the conventional approach of aircraft 'stepping down' from one flying level to the next.

- Jan 24 – Sep 24 total: 89%
- Jan 23 – Sep 23 total: 89%



We are the  
**Journey  
Makers**

Any Questions?

Our contact details:  
[FlightEvaluationUnit@magairports.com](mailto:FlightEvaluationUnit@magairports.com)

We are the  
**Journey  
Makers**

Jonathan Challis

Future Airspace Consultation &  
Technical Liaison Manager

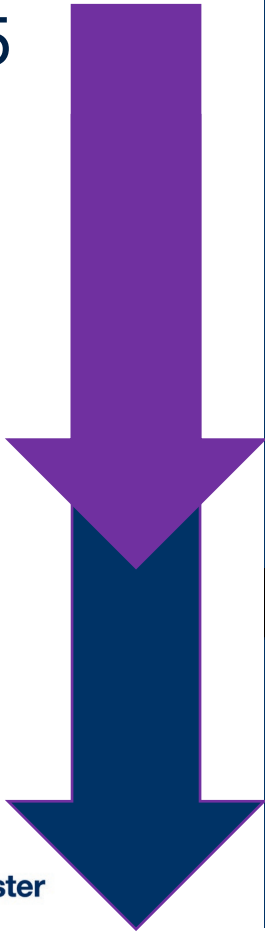
The Manchester Airport Future  
Airspace project –*Update*



# Overview of CAP1616 Airspace change processes underway

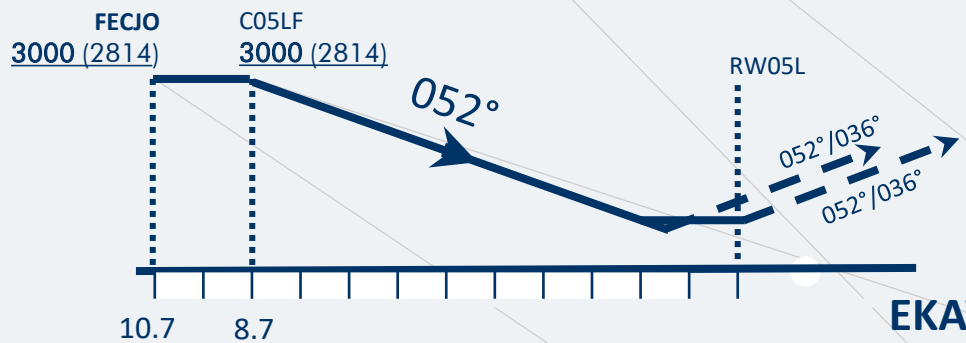
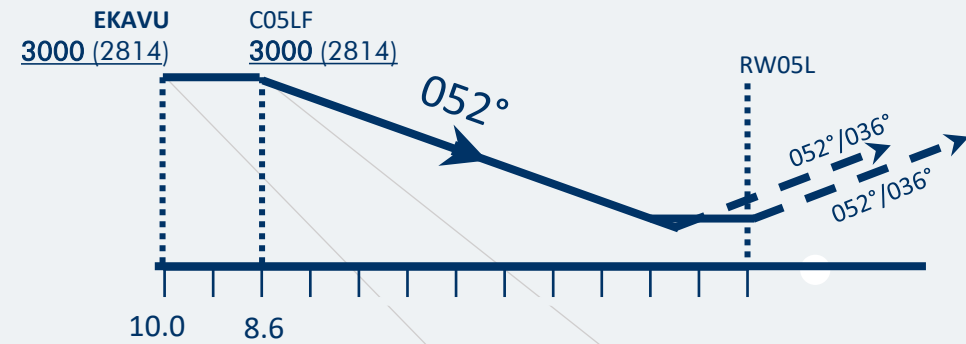
Introduce new navigational procedures that make best use of aircraft and aviation technology and remove reliance on outdated ground based navigational aids.

NERL switch off  
MCT DVOR end  
of 2025

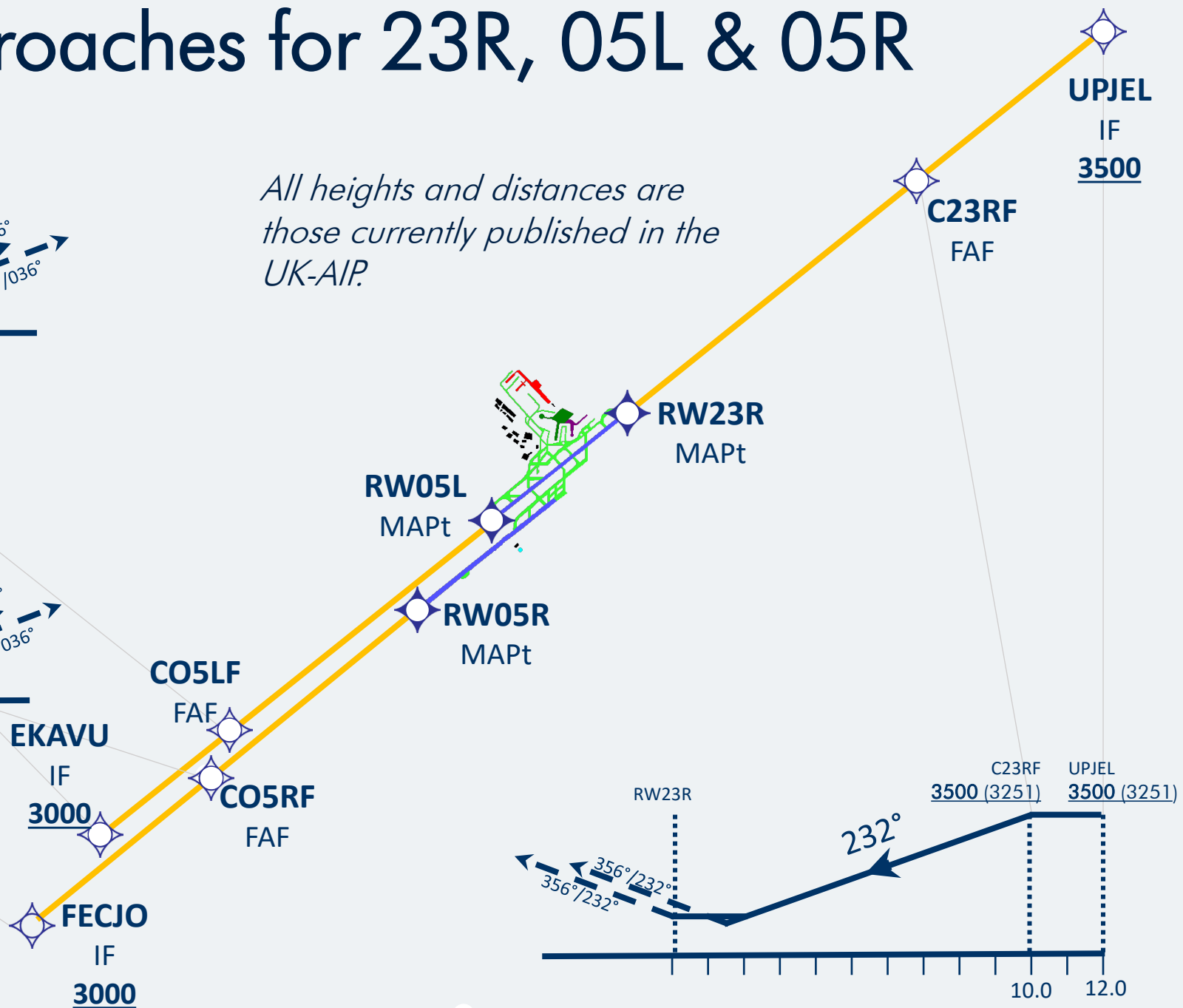


		Airspace change ID	Descriptor	Change level	Current Stage	Notes
Medium term	Delivery June 2025	ACP-2024-002	Contingency RNP Approaches	3	4	Replacement contingency approaches for Runway 23R, Runway 05L and Runway 05R (in case of ILS outage with VOR/DME approaches not available).
	Delivery September 2025	ACP-2024-007	RNAV Substitution of Eligible Conventional Procedures	3	4	'RNAV Substitution' will provide operational resilience and allow the SIDs and IAPs to continue to be flown following the same lateral and vertical profiles as today without the MCT DVOR and DME.
Long term <i>Earliest possible implementation 2028</i>		ACP-2019-23	Manchester Airspace Modernisation - Departures and Arrivals (FASI)	1	3	The Manchester Airport Future Airspace project (FASI).

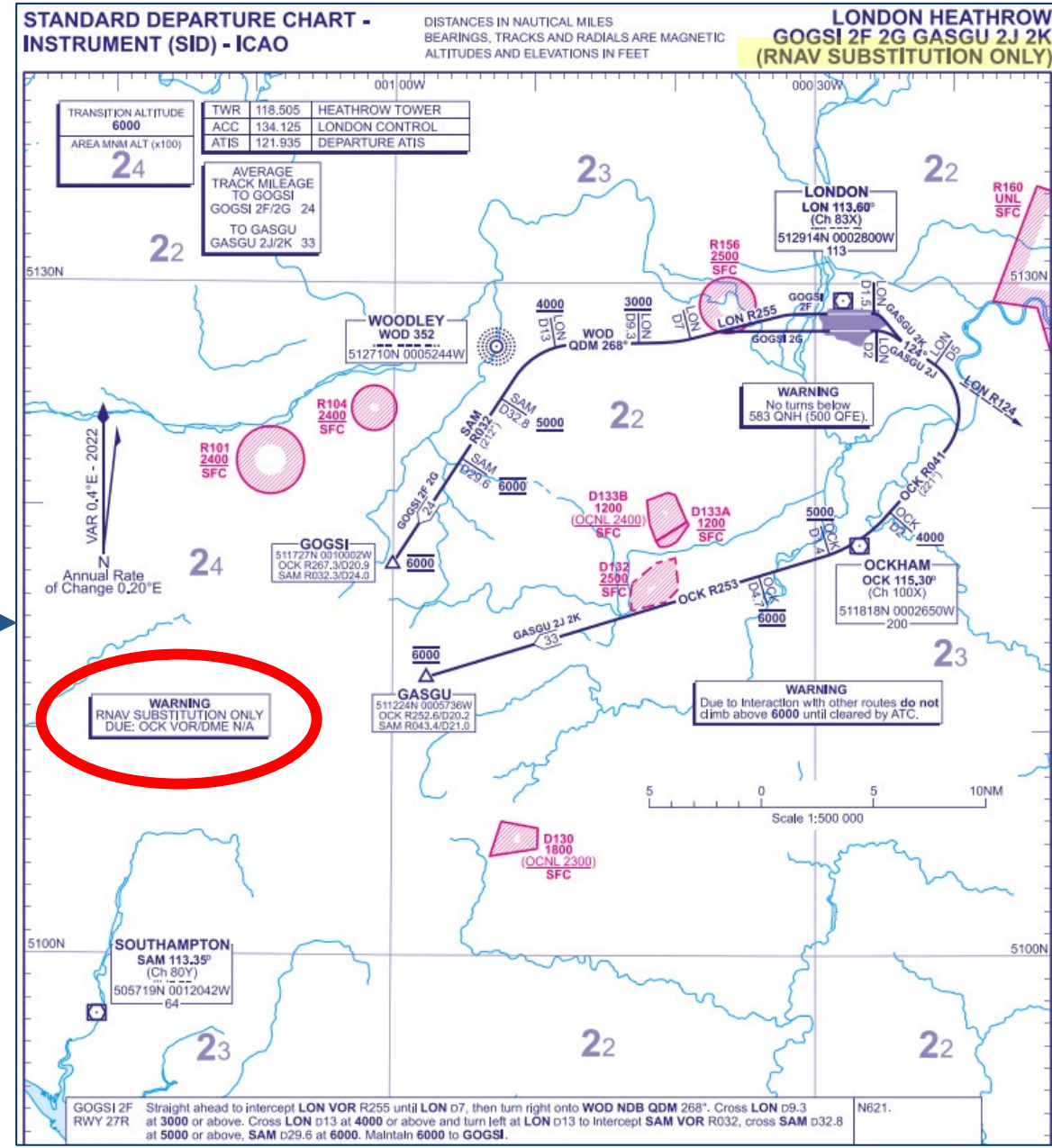
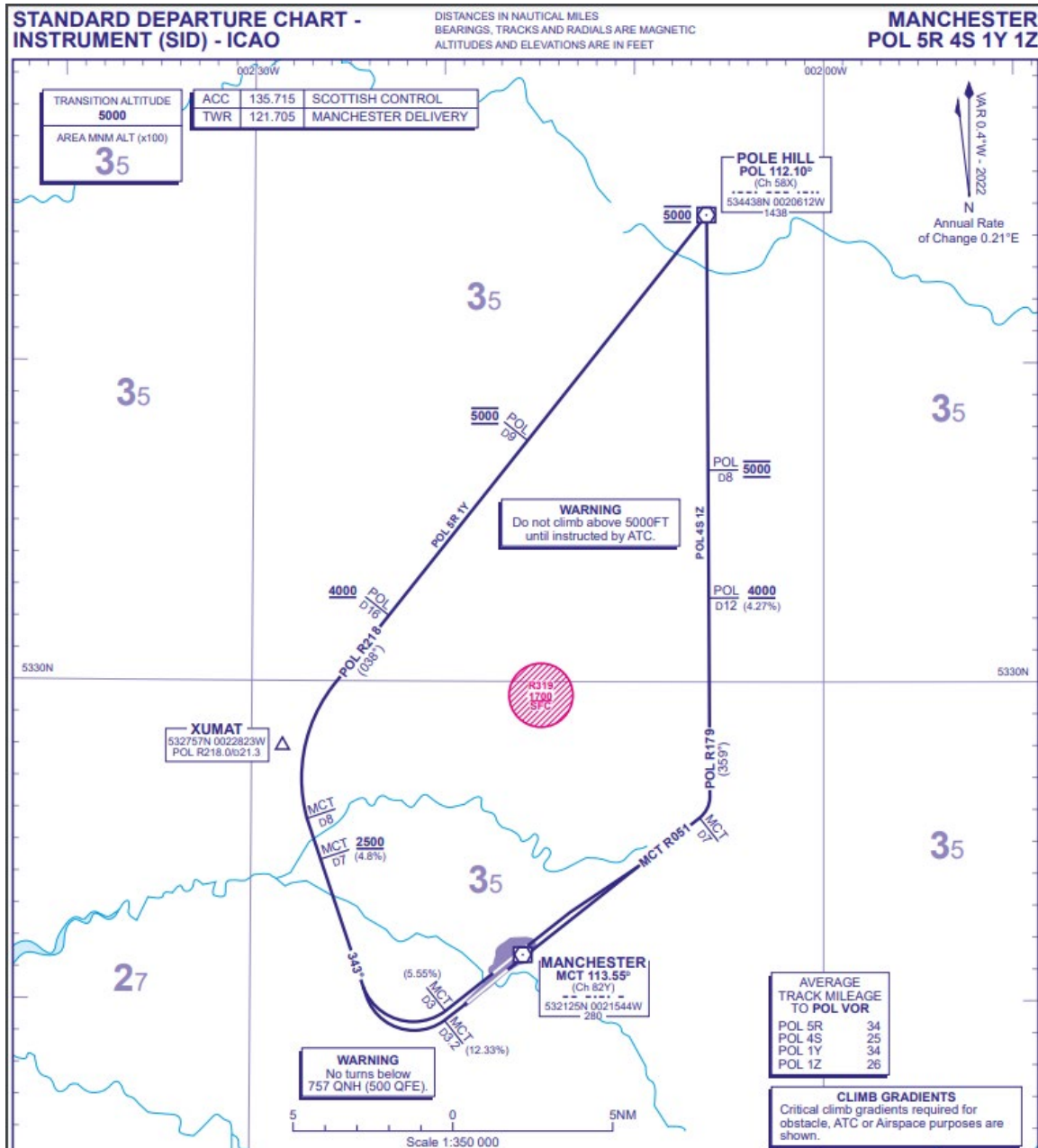
# Introduce RNP Approaches for 23R, 05L & 05R



*All heights and distances are those currently published in the UK-AIP.*



# RNAV Substitution of all eligible procedures





# The Manchester Airport Future Airspace project



# Fuel efficient/lower carbon/quieter (quicker, cleaner, quieter)

## Arrivals

### Continuous Descent Approach (CDA)

Lower power settings from higher altitude. No level off segment



In 2023 over 89% of arrivals CDAs. Current airspace restrictions mean they are not always possible.

## Departures

### Continuous Climb Operation (CCO)

Enables aircraft to reach final efficient cruise altitude sooner



Interactions with other airports in the Manchester Terminal Manoeuvring Area makes achieving CCO routinely difficult (in 2023 88% were).



# Cluster interdependencies



Scottish Terminal  
Manoeuvring Area (STMA)

Edinburgh

Glasgow



Aberdeen 'Manoeuvring Area'

*Aberdeen (Stage 3 Consultation)*



Manchester Terminal Manoeuvring Area (MTMA)

East Midlands

Liverpool John Lennon

Manchester

Leeds Bradford



West Terminal Airspace (WTA)

Bristol

Cardiff  
*Withdrawn*

Exeter  
*Withdrawn*



London Airspace South (LAS)

*Gatwick (south of airport)*



London Terminal Manoeuvring Area (LTMA)

Biggin Hill

Bournemouth

Heathrow

*Gatwick (north of airport)*

London City

Luton

Manston

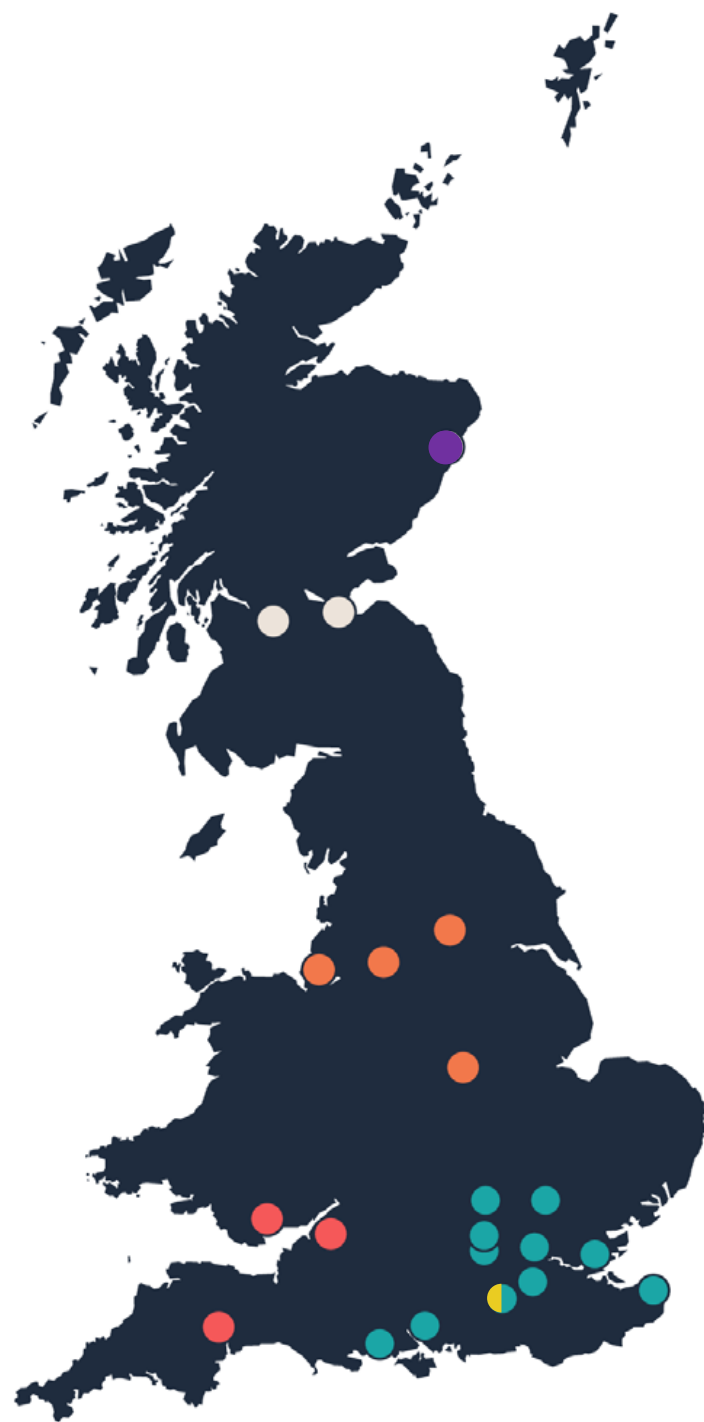
RAF Northolt

Southampton

Southend

Stansted

Farnborough



# TIMELINE

MAN/EMA are here

2019-2020	2021-2023	2023-2025*	2026*	2026*	2027 onwards*	2028 onwards*
Stage 1 Define	Stage 2 Develop and assess	Stage 3 Consult	Stage 4 Update and submit	Stage 5 Decide	Stage 6 Implement	Stage 7 Post-implementation review
<p><b>Step 1A</b> We sent our Statement of Need to the CAA</p> <p><b>Step 1B</b> We gathered views on design principles before proposed principles were sent to the CAA for approval.</p>	<p>Using the design principles produced during Stage 1, as a framework, we developed design options to assess with the help of our Stakeholders.</p> <p>Details of the process followed to develop and assess the design are sent to CAA.</p>	<p>Carry out further detailed work on the design options including systemization evaluations simulations and a full options appraisal before we prepare to consult the public on the options that hold up best.</p>	<p>We will update our airspace change proposal, taking public and stakeholders' feedback into account, before sending it to the CAA.</p>	<p>We expect the CAA's decision on whether to approve any airspace change.</p>	<p>If approved, any airspace changes could be put in place.</p>	<p>The CAP1616 process gives the CAA and airports 12 months to review any change that has been made to airspace.</p>
<p>The CAA reviewed and signed off the documentation relating to Stage 1, and we passed the</p> <p><b>"Define" Gateway</b></p>	<p><b>"Develop &amp; Assess" Gateway</b></p>	<p><b>"Consult" Gateway</b></p>		<p><b>"Decide" Gateway</b></p>		



\*All future dates are provisional pending CAA approval and alignment with the wider Airspace Modernisation Strategy

We are the  
**Journey  
Makers**

Any Questions?

Our contact details:

[futureairspace@manairport.co.uk](mailto:futureairspace@manairport.co.uk)

[www.manchesterairport.co.uk/futureairspace](http://www.manchesterairport.co.uk/futureairspace)

We are the  
**Journey  
Makers**

**Andy Thompson**  
Planning Manager

**Development update**



# Developments update

## MAN-TP

1. Sydney Avenue replacement
2. T2 Wayfinding

## Other Airport Developments

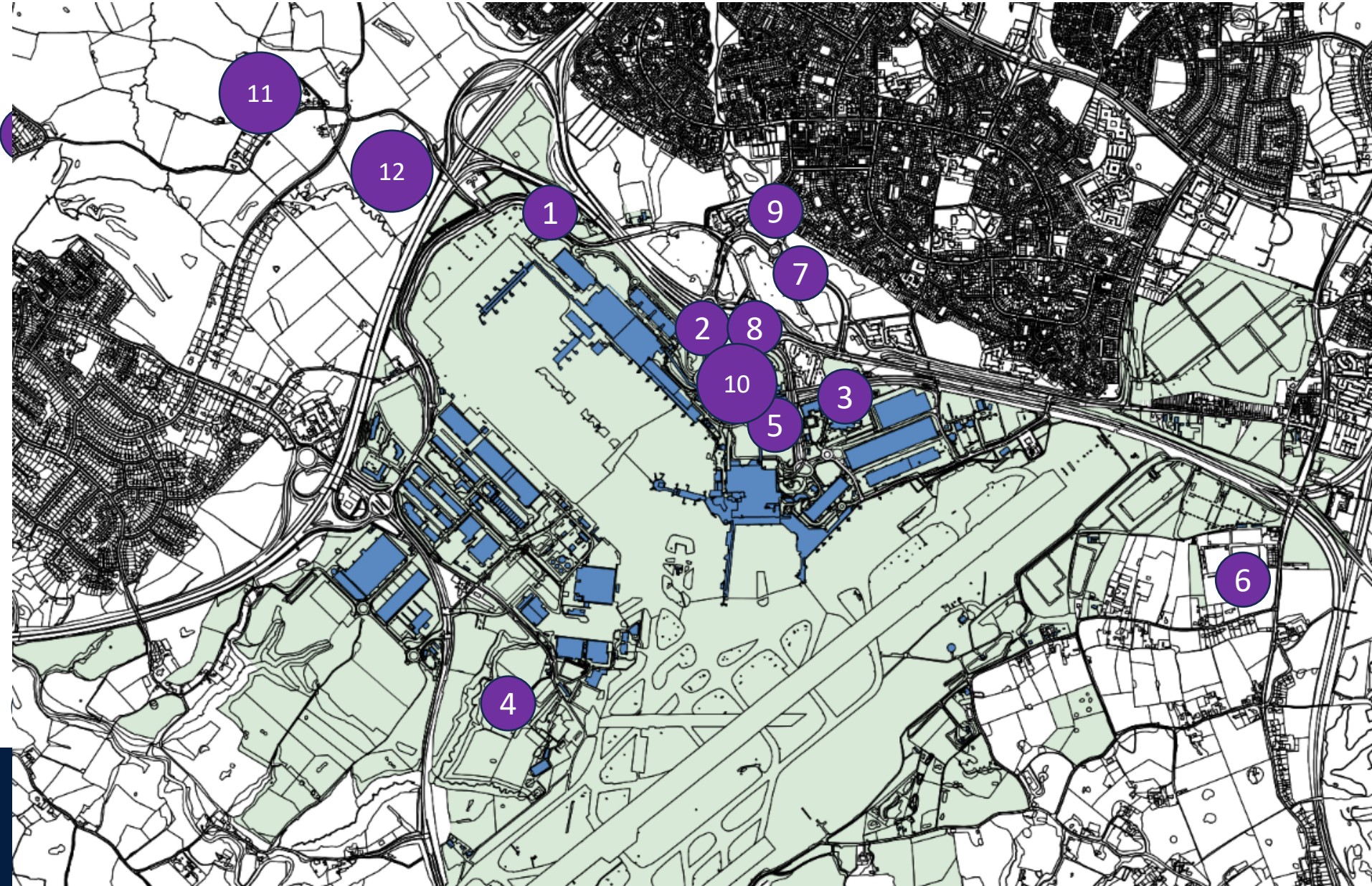
3. Clayton Hotel extension
4. Clough Bank B car parking
5. Station platform lengthening
6. Boundary Farm

## Airport City / MIX Manchester

7. Strategic Regeneration Framework
8. Tribe Hotel
9. Dakota Hotel
10. New Premier Inn hotel

## Beyond the Airport

11. Timperley Wedge / Davenport Green
12. Northern Powerhouse Rail station





# Sydney Avenue replacement



We are the  
**Journey  
Makers**

Any Questions?

We are the  
**Journey  
Makers**

**Rhys Whalley**

Corporate Affairs Director

**Business Update**

# Introduction to Manchester Airport



# Manchester Airport

The UK's "second city", Manchester is at the centre of an expansive catchment area

**2.8m**

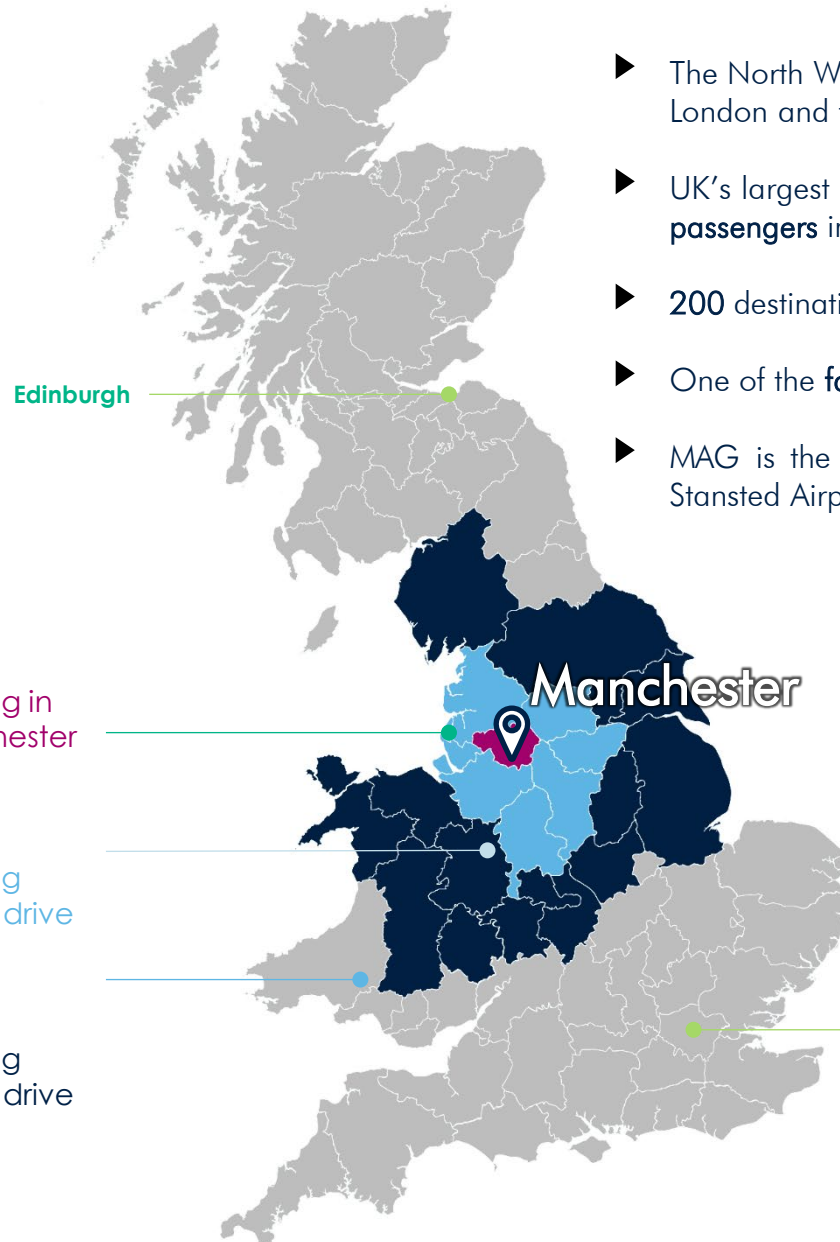
Population living in  
Greater Manchester

**11.3m**

Population living  
within a 1-hour drive

**23m**

Population living  
within a 2-hour drive

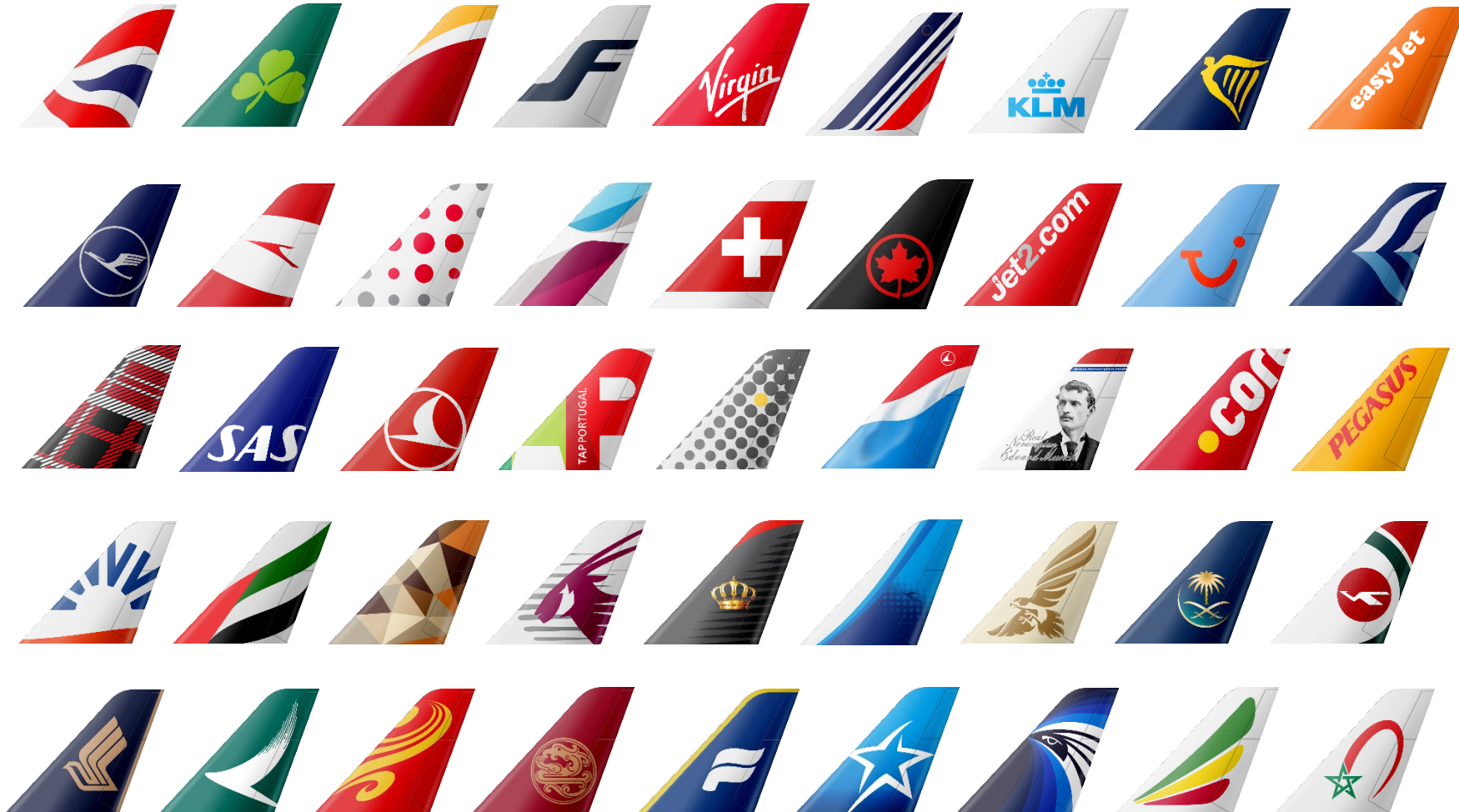


- ▶ The North West is the UK's **largest economic region** outside of London and the South East
- ▶ UK's largest airport outside of London with over **30 million passengers** in the last 12 months
- ▶ **200 destinations** and **50 airline partners**
- ▶ One of the **fastest growing** major airports in Europe
- ▶ MAG is the **largest** UK-owned airport operator (owns London Stansted Airport, Manchester Airport and East Midlands Airport)
- ▶ Home to two of the world's most successful and popular football teams: **Manchester United** and **Manchester City**
- ▶ **5 universities** in the catchment and one of the **largest student populations in Europe** with over 123k students from 130 countries
- ▶ Numerous multinational corporations with a presence in the city, including **AstraZeneca, BASF and Amazon**



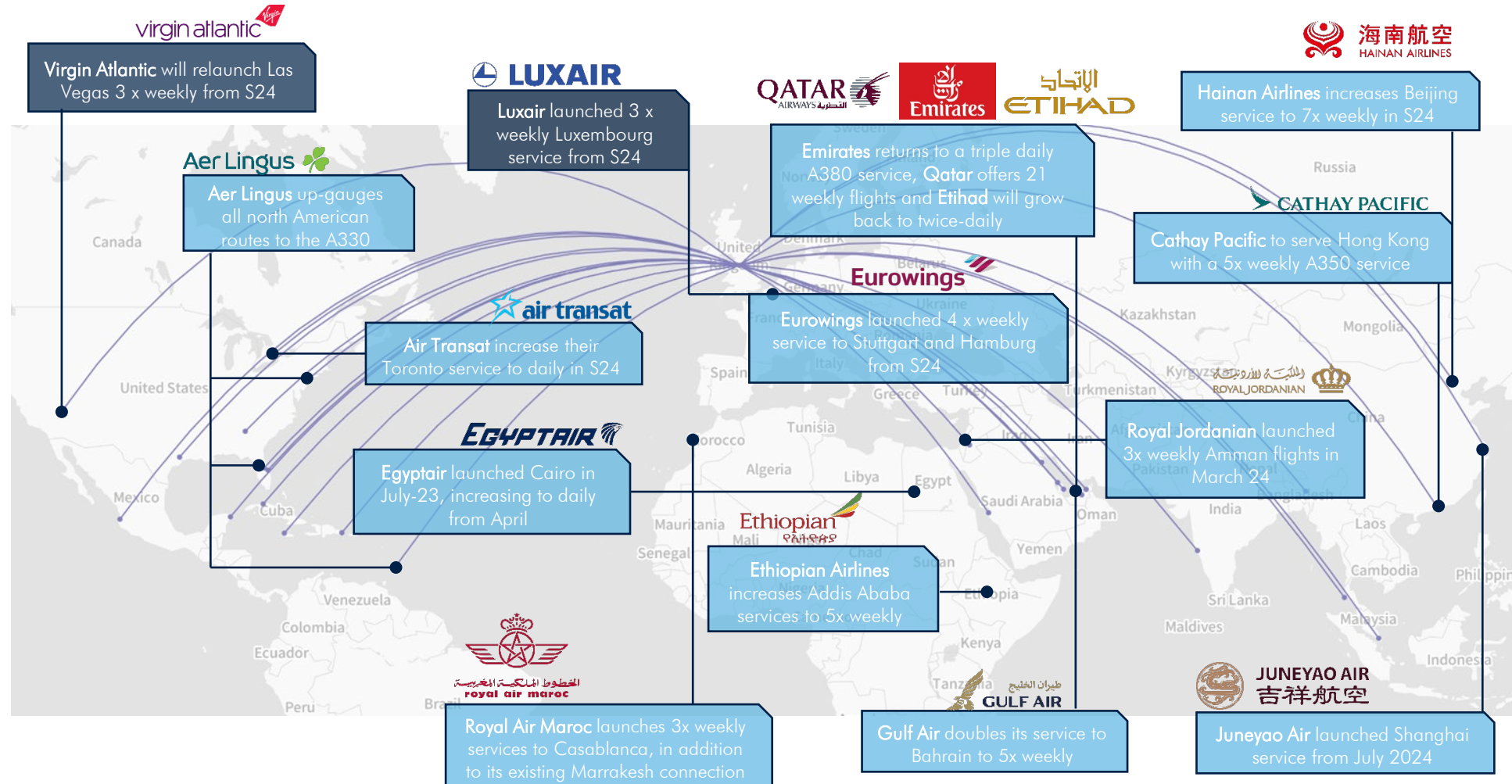
# Route Network

## Manchester Airport's airline partners



# Route network update

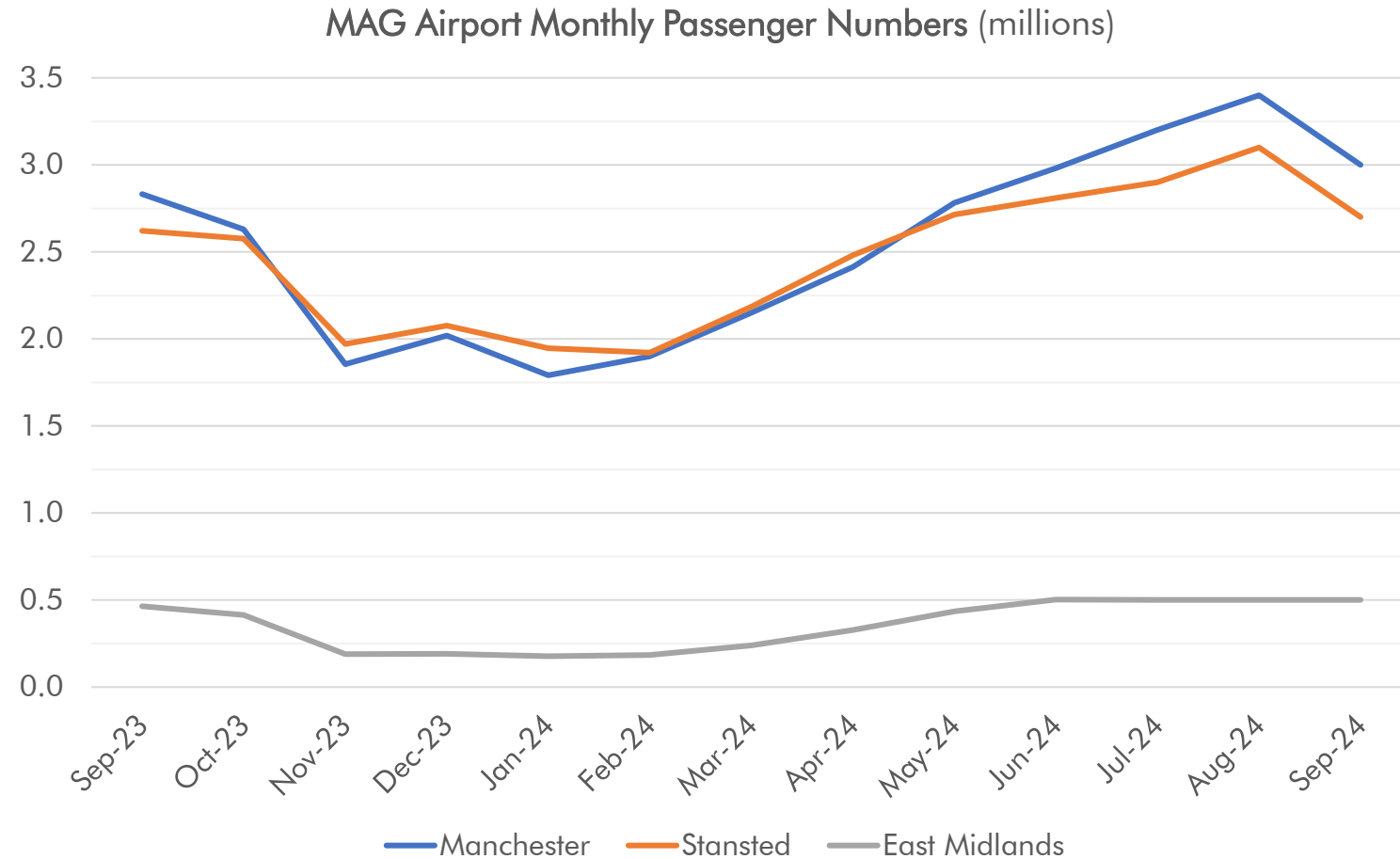
In 2024, 50 carriers will serve over 200 routes from Manchester Airport





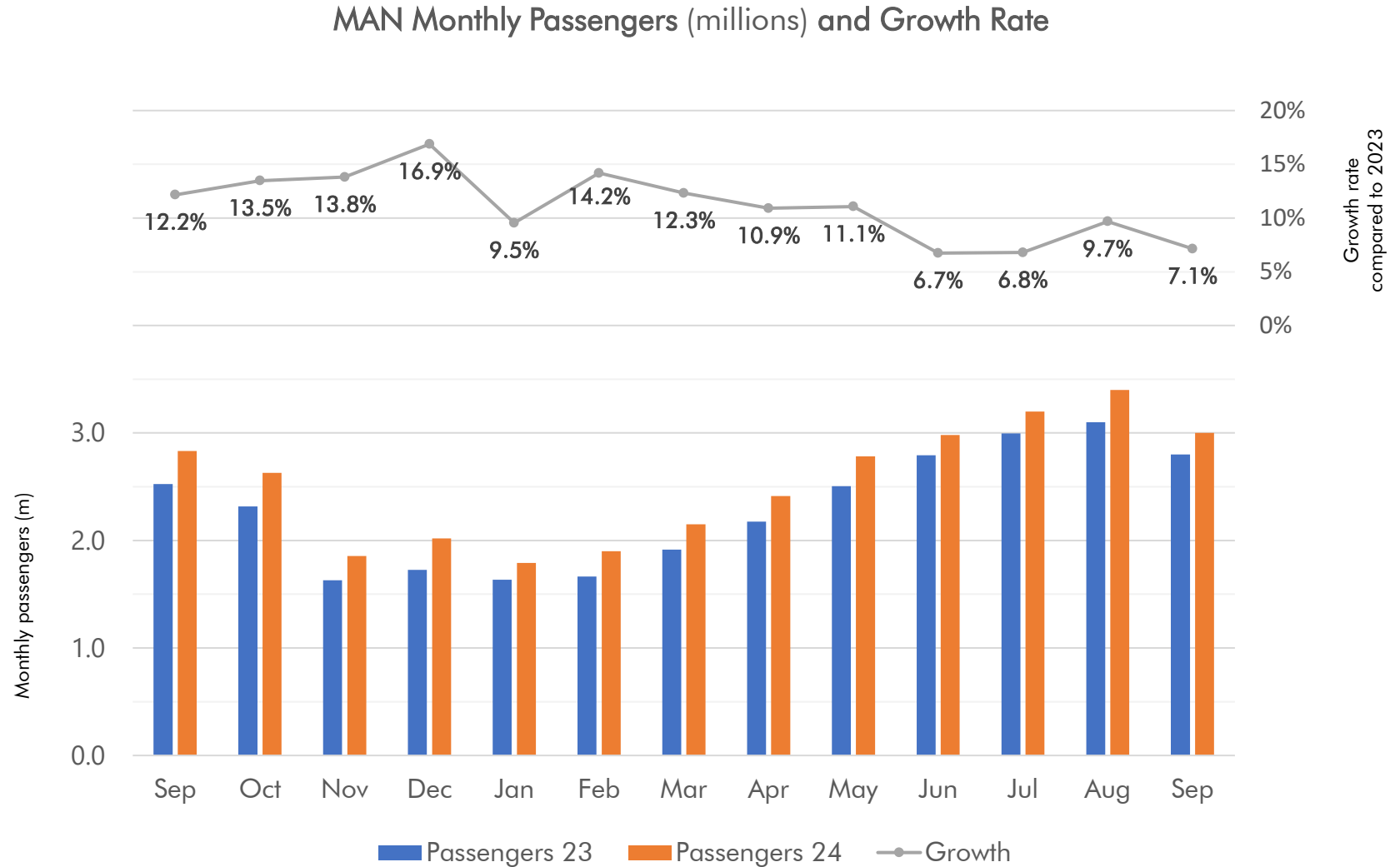
# MAG Performance

- In the past 12 months to Sept 24, passenger numbers through MAG's 3 airports reached 63.7m which is annual growth of 9%
- Manchester reached 30.1m, representing annual growth of 10.5%
- Stansted reached 29.3m, representing annual growth of 7.2%
- East Midlands reached 4.2m passengers representing annual growth of 11%



# Manchester Airport Passenger Performance

- Manchester passenger numbers grew by 10.5% during the 12-month period to Sep-24.
- Our latest traffic figures show that Manchester Airport served a total of 28.7m passengers in the 2023/24 financial year, which is Manchester's busiest ever financial year.
- In September, Manchester Airport recorded more than 30 million passengers in a 12-month rolling period for the first time ever.



# Manchester Airport Transformation Programme



# Transformation Journey

2015

Construction work  
commenced on  
MAN-TP

2019

Terminal 2 extension  
opened

2022

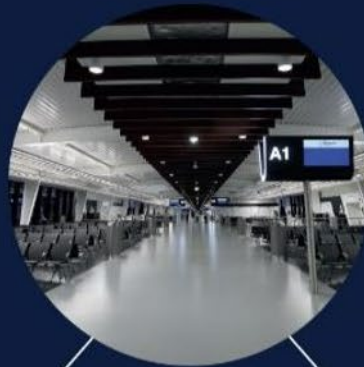
Phase 2 of MAN-TP  
completes



Manchester Airport's  
£1 billion Transformation  
Programme announced



2017



Pier 1, MSCP West  
and first new aircraft  
stands opened



2021



Phase 2 on MAN-TP  
commenced



2025



# Phase Two – what's being delivered?



## Key Elements of Phase Two

- ① Refurbishment of original Terminal 2 building including extended departure lounge with a range of high street and premium shops, Northern eateries and a champagne bar
- ② New security hall with next generation, 3D security scanners
- ③ Pier 2 with new, flexible aircraft stands and modern boarding gates
- ④ Dual taxiway and airfield works, improving the efficiency of the airfield
- ⑤ Extended baggage system, doubling the capacity of the system and increasing resilience
- ⑥ Road network modifications – improving the flow of traffic to and from Terminal 2

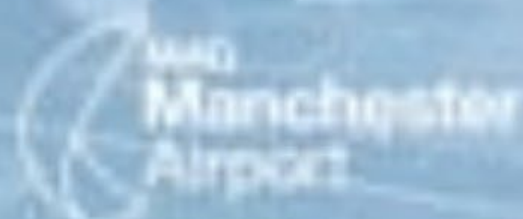






# Manchester Airport Transformation Programme Retail update

#YOURNEWT2



# aether – the private terminal



# aether

- Reservations for Manchester Airport's private terminal, aether, now open for travel from 4<sup>th</sup> November.
- aether reimagines the airport process, and with it, considers every detail to provide the passenger with the most enjoyable start or end to their journey.
- 3 packages on offer: Express, Inclusive – Cabin bags, Inclusive – Checked bags.
- aether experience designed to put travellers at ease ahead of flights or upon departures.
- Menu carefully curated by chef Adam Reid to bring an elevated dining experience.
- Dedicated chauffeur-driven cars waiting to take passengers from aether when time to board flight or upon arrival.



We are the  
**Journey  
Makers**

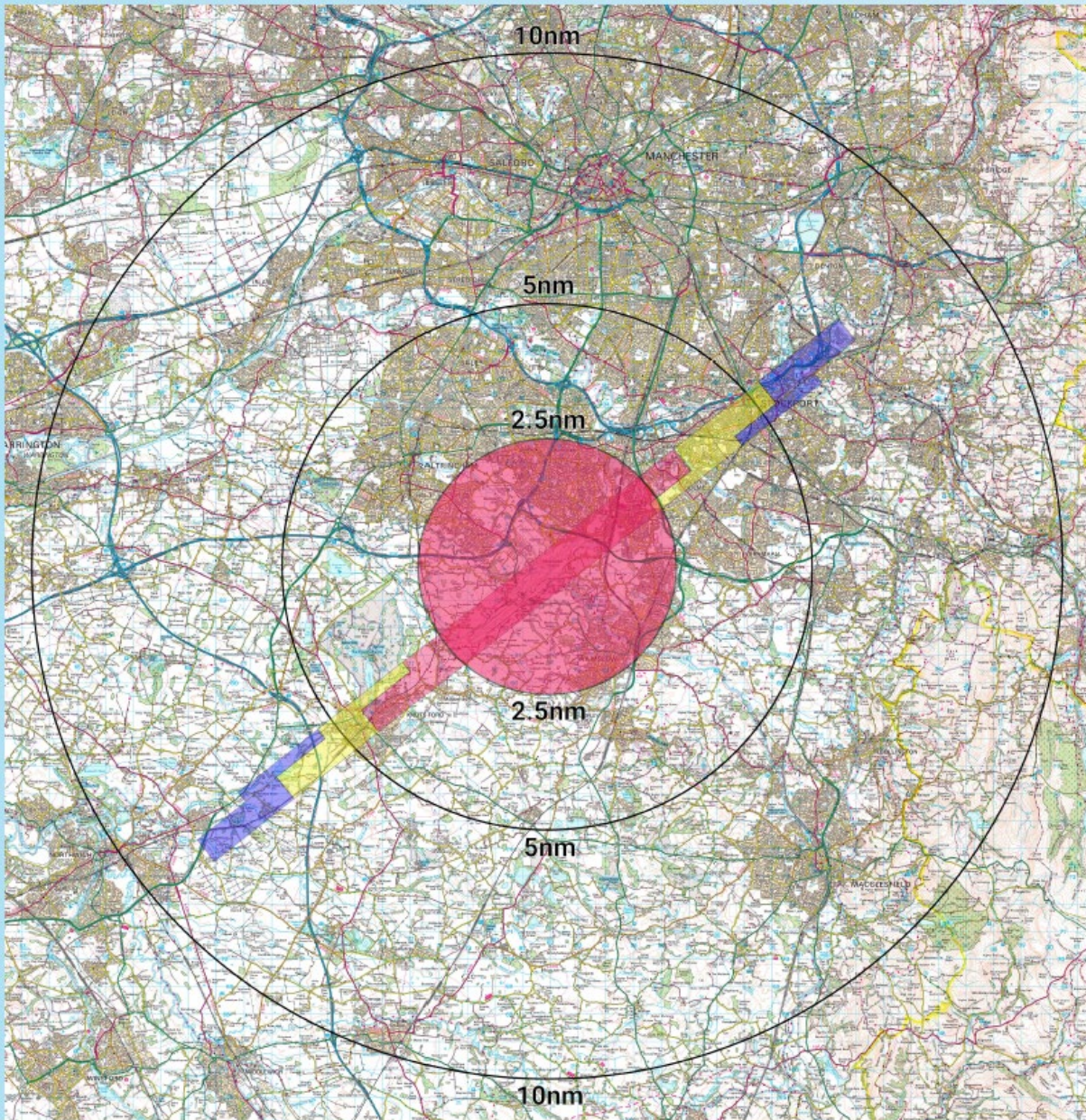
**Jonathan Challis**

Future Airspace Consultation &  
Technical Liaison Manager

Seasonal reminder.....







Crown Copyright Licence Number AL 18020A

# Winter is upon us

The clocks went back  
Sunday and Manchester  
Airport commenced winter  
ops.....  
Our annual reminder  
is also here



## Firework displays near Manchester Airport

Closeness to airport	Domestic display	Professional display
Within 1.1 miles either side of Manchester Airport or its flightpaths, or up to three miles beneath the flightpaths of Manchester Airport (See the areas coloured red on map.)	You can safely use ground-based fireworks that are designed to cause no injuries to people within five metres. You must not use rockets, mortars or fireworks that shoot up into the sky.	Displays must be arranged with Manchester Airport.
Within three to five miles of Manchester Airport and underneath its flightpaths (See the areas coloured yellow on map.)	You can safely use ground-based fireworks that are designed to cause no injuries to people within 25 metres. You must not use rockets, mortars or fireworks that shoot up into the sky.	No fireworks must shoot up higher than 200 feet, unless you have permission from Manchester Airport.
Within five to seven miles of Manchester Airport and underneath its flightpath (See the areas coloured purple on map.)	You can safely use standard domestic fireworks.	No fireworks must shoot up higher than 800 feet, unless you have permission from Manchester Airport.
Within seven to 10 miles of Manchester Airport and underneath its flightpaths	You can safely use standard domestic fireworks.	No fireworks must shoot up higher than 1000 feet, unless you have permission from Manchester Airport.



# Any other business

# Questions?